



OUR HERITAGE

www.manheim1762.org 717-665-5560



Published by the Historic Manheim Preservation Foundation, Inc., 27 Market Square, Manheim , PA 17545

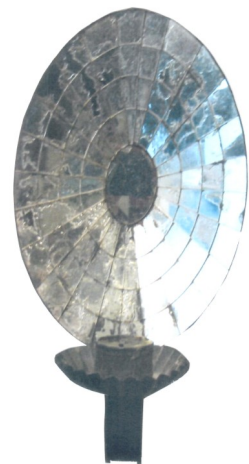
June 2020

Early Church Lighting



The candle sconce pictured here also appeared in the June 2017 issue of **Our Heritage** and in the 2012 HMPF publication recognizing the 250th Anniversary of the 1772 Zion Lutheran Church of Manheim. The sconce was passed down through many generations as coming from the 1772 (first) church. It's pictured here to show a comparison with a mirror-back candle sconce also considered as from the early Zion Lutheran Churches of Manheim.

The second church, built in 1857, would have been lit by candlelight and oil lamps, since electric lighting came into use in the late 1880s-1890s.. It's believed that when the second church was razed, in preparation to build a third church in 1891 and 1892, some of the early lighting went to church members. It might have been around this time when Nathaniel Long, a veteran councilman of the church, acquired the chandelier from the early churches and other members acquired the painted tin and mirror-back candle sconces. The chandelier is also picture in this article, but, unfortunately, it is no longer in the town of Manheim. In 1929, a public auction was conducted



for the estate of Nathaniel Long, and it was at that time the early chandelier was purchased by Henry Francis DuPont, and is now to be found in the Winterthur collection. The chandelier sold for more than \$3,000.00 in 1929 and was the highest price paid for an item sold at the auction.



The sale brochure pictured the chandelier and stated:

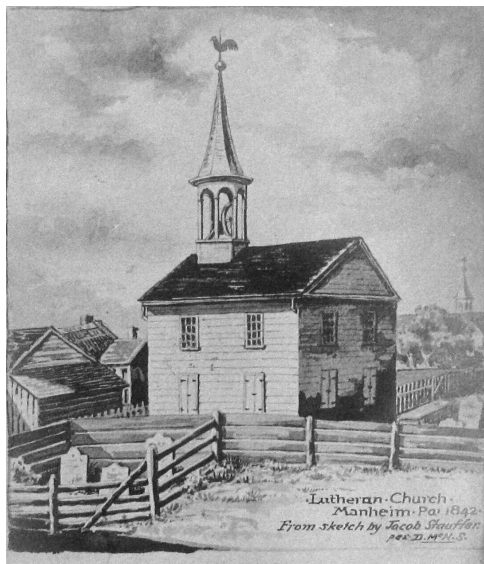
No. 117 - RARE EARLY 17TH CENTURY 3 TIER EIGHT CANDLE CHANDELIER, with a Mirror Reflecting Center, with its original paint and leaf stenciling. The reflector is loose, but placed in its original position, all intact. This chandelier is considered a rare specimen, no other known of this pattern. It has occupied a space in the Attic of the Long Homestead for many generations.

There has been some thought that the mirror reflecting center was not original to the chandelier when made but was an add-on to reflect needed light, perhaps when the mirror-back sconces were acquired. Correct?

Footnotes: The oval mirror-back sconce measures 12" overall and the mirror-glass reflector is 6" x 9". The sconce pictured is one of two believed to have been used in the two early Zion Lutheran Churches.

In **Colonial Lighting**, by Arthur H. Hayward, published in 1923, is pictured an example of a sconce made with segments of mirror glass and the following information accompanies the picture:

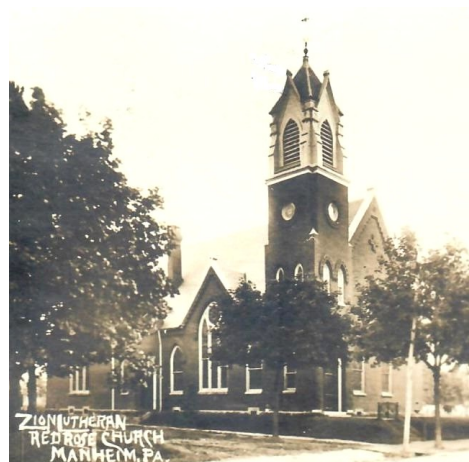
"slightly concaved back covered with tiny pieces of looking glass fitted together with infinite skill, multiplying the light of the candle many times. These reflectors are extremely scarce."



1772 CHURCH



1857 CHURCH



1892 CHURCH



Stiegel-Coleman Mansion



Our Ensminger Library received the above DVD as a gift from Dwayne Earhart. Dwayne produced a video of areas known as Elizabeth Furnace, the estate owned at times by Jacob Huber; Henry William Stiegel and Robert Coleman. It is of professional quality, even to the point of having appropriate music accompany the pictures. The auction sale took place September 28, 2013.